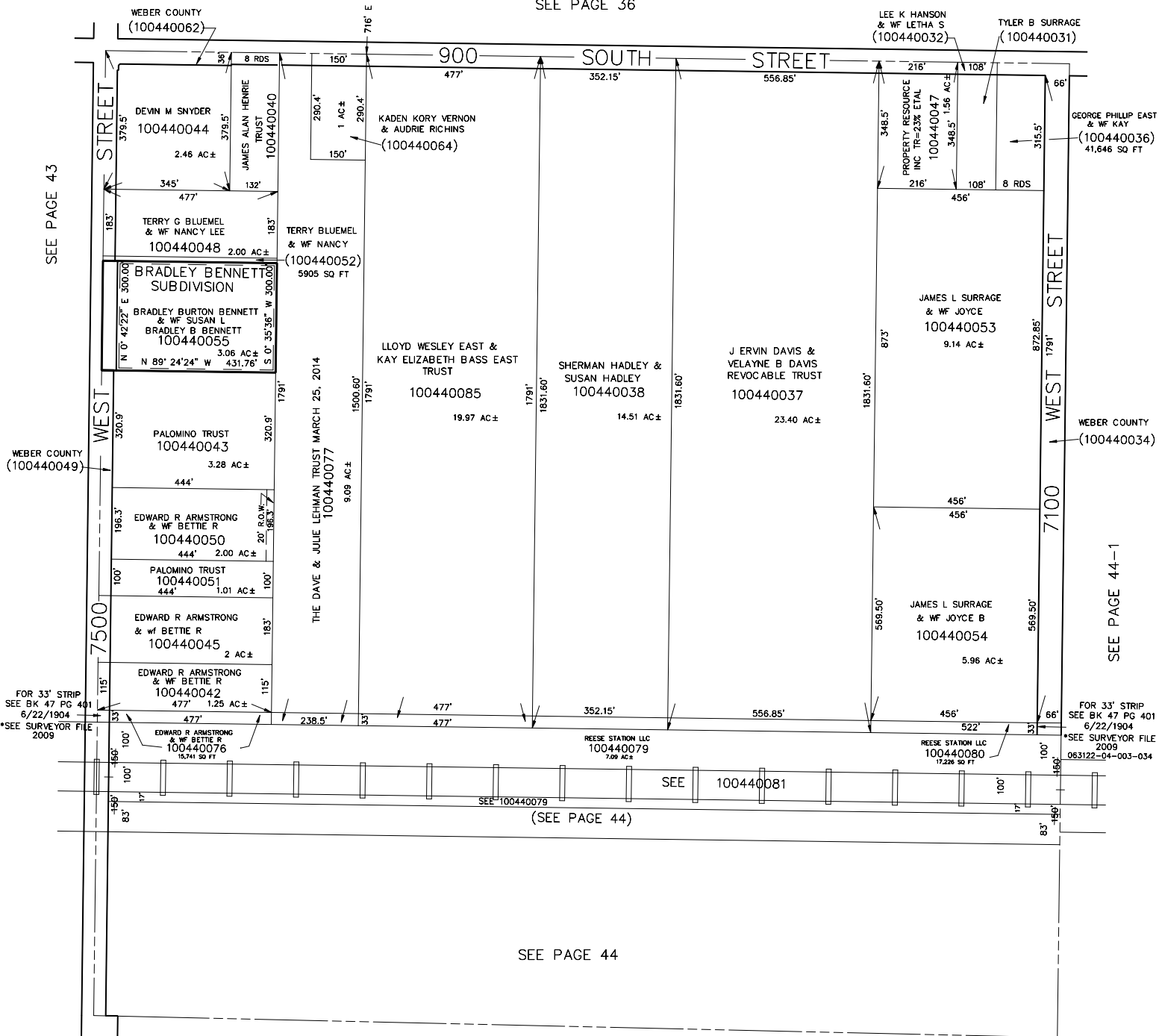


N.W. 1/4
SECTION 23, T.6N., R.3W., S.L.B.& M.

TAXING UNITS: 303

IN WEBER COUNTY
SCALE 1" = 200'

SEE PAGE 36



SEE PAGE 43

WEBER COUNTY (100440049)

GEORGE PHILIP EAST & WF KAY (100440036) 41,646 SQ FT

WEBER COUNTY (100440034)

SEE PAGE 44-1

FOR 33' STRIP SEE BK 47 PG 401 6/22/1904 *SEE SURVEYOR FILE 2009

FOR 33' STRIP SEE BK 47 PG 401 6/22/1904 *SEE SURVEYOR FILE 2009 063122-04-003-034

(SEE PAGE 44)

SEE PAGE 44